

Strode College Day Nursery



STRODE
College

Contents

1. About Us
2. Opening Times
What about Snack Times and Lunch Times?
3. What does my Child Need to Wear / Bring to Nursery?
- 4 - 6. Aims and Learning Goals
6. Nursery Policies
- 6 - 7. Ofsted
8. Feedback
9. Campus Map



About Us

Strode College Day Nursery is a purpose built Nursery situated on the College campus. It is a 16 place daycare facility for children aged from 2 years to school age.



We provide a childcare service for children of students, staff and also have places available for the local community. We work to Ofsted's Statutory Framework for the Early Years Foundation Stage.

It is our aim to provide a loving, safe, secure and stimulating child-centred environment where children have the opportunity to play and learn with others. We work with parents and carers in support of the child and feel that a close partnership is essential.

We encourage children and parents to visit regularly before the child's start date to build the child's confidence and become familiar with the environment, staff and other children.

The children benefit from being part of the College as they are able to visit and access the excellent facilities available including the Sports Hall, Theatre and Performing Arts studio and Hairdressing Salon with easy access for wheelchairs. Subject tutors facilitate activities especially organised for the children. The children take an active part in the College Awareness weeks such as One World Week and Personal Safety.

We are also very fortunate to be able to provide a training placement for students studying on Child and Social Care courses at the College. We feel this is our opportunity to pass on our good practice, knowledge and experience.



Opening Times

Monday to Friday 8.45am - 5.00pm

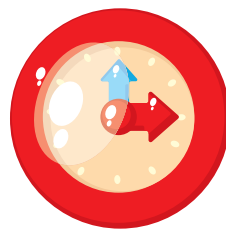
Our session times are as follows:

8.45am - 1.00pm Morning sessions

1.00pm - 5.00pm Afternoon sessions

Full day sessions are available. We also offer a service from 8.00am and up to 6.00pm Monday to Friday (additional charges apply, please see staff).

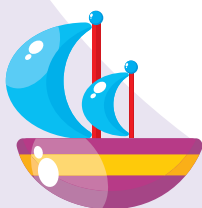
The Nursery is open from September to July. We are not open at weekends or on Bank holidays.



What about Snack Times and Lunch Times?

We provide a drink of milk, or water, and a healthy snack of fruit and vegetables both mid-morning and mid-afternoon.

We provide a hot meal for all children attending the morning session. The meals are cooked on campus in the College Refectory and brought to the Nursery. The menus are planned in line with a healthy eating policy and there is always at least one vegetarian option on offer each day. At the start of each term you will be given a menu and asked to choose the meal best suited for your child. Special dietary requirements are accommodated. There is an additional cost for the hot meals. Please see the Nursery Information Sheet for current prices (available from the Nursery).



What does my Child Need to Wear / Bring to Nursery?



The children will be given the opportunity to participate in activities which may be messy. Although protective clothing will be provided, accidents do happen. We ask therefore that children are dressed in play clothes and we are provided with a spare set of clothes in case of spills or accidents.

Appropriate footwear is also important; trainers are ideal, especially for running

around in the garden and for PE sessions. Also, dependent on the weather, we ask that children have a jacket or a coat for outside play, and in sunny weather a sun hat and sun cream.



For those children still in nappies we should be provided with a named bag containing nappies and wet wipes.



All items brought into the Nursery should be clearly labelled with the child's name.



Aims and Learning Goals

The Nursery is a child-centred environment, created and maintained to enable your child's physical, intellectual, emotional, and social development to be enhanced in their learning through play.



We aim through our pre-school education programme to incorporate the framework of the Early Years Foundation Stage. The pre-school education programme ensures all activities accommodate the individual needs of each child who are supported in preparing for school in a structured way ensuring that their learning goals are achieved.



The Early Years Foundation Stage framework is in place to ensure that parents are offered consistent high-quality provision and information across all childcare services. It is set in context of the 'Every Child Matters' agenda. It is not a curriculum for young children but is tailored to ensure that every child is learning through high-quality, play-based activities.

The structured programme will be used to provide activities designed to stir curiosity and hold attention; numbers and letters will permeate all activities through conversations between adult and child and encouraged between children. Connections to Numeracy, Literacy and Science should come naturally.

We will be focusing on each child's individual interests by regularly observing their play and conversations then planning appropriate activities to enable them to become confident, independent learners. We will continue to observe, assess and plan in this way during the whole time your child is at nursery.



We will endeavour to work in partnership with parents to provide a holistic service and would welcome any comments and suggestions which will assist us in this process.

We will record your child's progress as well as keeping photographic evidence. All records are available for you to see at any time.

There are 6 areas of learning in the curriculum guidance:

Personal, social and emotional development – The focus is on the children learning to work, play and co-operate with others in a group beyond their family. Important aspects of personal, social, moral and spiritual development are covered, including the development of personal value and an understanding of self and others.

Communication, language and literacy – Important aspects of communication, language and literacy development are covered to provide the foundation for literacy. The focus is on developing competency in communication, conversation, enjoying writing and developing a love of books, stories and rhymes etc.



Problem Solving, reasoning and numeracy – Important aspects of mathematical understanding are covered to provide the foundation for numeracy. The focus is on achievement through practical activities and on using and understanding language in the development of simple mathematical ideas.

Knowledge and understanding of the world – The emphasis is on the development of knowledge and understanding of the environment, other people and features of the natural and made world. This provides a foundation for historical, geographical, scientific and technological learning.

Physical development – The focus is on development of physical control, mobility, awareness of space and manipulative skills in both indoor and outdoor environments. The aim is to establish a positive attitude towards a healthy and active way of life.

Creative development – This centres on the development of the imagination and ability to communicate and express ideas and feelings in a creative way.



We work at each child's own pace and so all our activities are adapted to meet the children's individual needs.

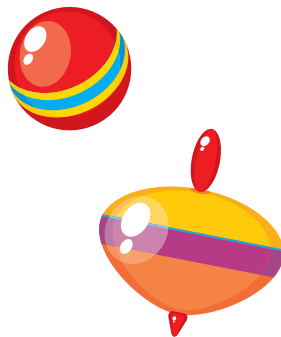
We offer two sessions of Physical Education a week using the College Sports Hall and safe outdoor play in our enclosed Nursery playground.

We will be assessing and regularly reviewing your child's needs through our careful system of key working and record keeping which will include a personal profile recording your child's achievements to which you will have access upon request.



Nursery policies

Copies of the Nursery policies including Admissions, Special Educational Needs, Behaviour, Parental Partnership, Health and Safety etc. are available in the Nursery foyer for your information. Our policies are reviewed on a regular basis and comments and suggestions from parents/carers are always welcome.



Ofsted

The Nursery is regularly inspected by Ofsted. An Educational Inspection looks at how the children are being taught and ensuring we are working within the Early Years Foundation Stage framework. Ofsted will also ensure that welfare standards set out by government are being met. Inspections can be carried out at any time without notice.



Comments from Ofsted:

'Children are very happy, settle quickly and receive the best possible support in their care and learning due to the dedication of a highly skilled and motivated staff team. Meeting children's individual needs is a priority for staff and children's preferences and interests are fully taken into account as daily routines and activities are planned.'



'Staff provide a warm welcome to individual children; key workers ensure they are available to chat to parents as they arrive to ensure any important information is shared.'

'Staff show a strong commitment to inclusion and consider the needs of all children when planning activities, events and routines.'

'Children learn to become confident with others around them and are frequently involved with the wider college community.'

'Children receive excellent support and are offered appropriate challenge which allows them to move on rapidly in all areas of their learning and development.'

'They talk about healthy eating with staff as they enjoy their freshly prepared cooked lunch and nutritious snacks during the day.'

'Future plans and activities are adapted to suit children's learning styles, interests and preferences, ensuring children are motivated and inspired to learn.'



The extracts above are from the Inspection which took place in March 2010 where our Nursery was judged 'outstanding' in every way. A copy of the Inspection report is posted on the notice board in the Nursery room and individual copies are available upon request.



Feedback

Strode College Day Nursery is committed to providing quality childcare and education. We always aim to treat everyone courteously, fairly and efficiently. Our aim is to work in partnership with parents and carers to ensure that their needs and those of their child are met and we welcome suggestions on how we can improve our facilities at any time.



Every parent and carer is asked to complete a feedback evaluation form which can be completed anonymously. Requests and suggestions are considered and, where appropriate, form part of an action plan.

Dissatisfaction with the service should be brought to the attention of the Nursery Supervisor or the Assistant Principal. If dissatisfied with the response, Ofsted can be contacted at: Early Years, Ofsted, Freshwater House, Redcliffe Way, Bristol, or Telephone 0845 6404040.

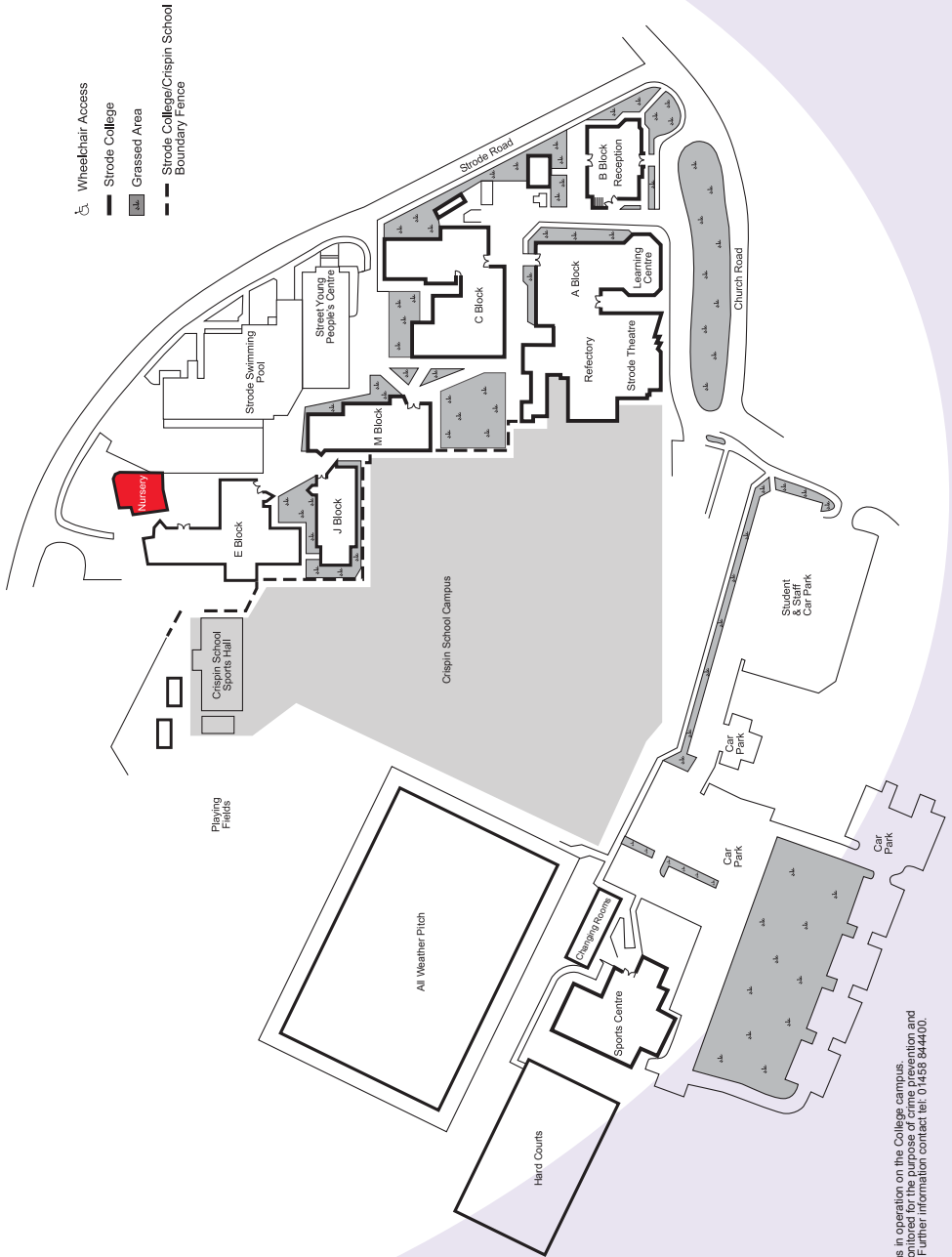


Enquiries:

Please contact the Nursery Supervisor on 01458 844412 who will be happy to provide you with further information.



Strode College Campus Map



CCTV cameras in operation on the College campus. Images are monitored for the purpose of crime prevention and public safety. Further information contact: Tel: 01453 644400.

If you would like this publication in an alternative
format please call 01458 844400



Church Road Street Somerset BA16 0AB
tel: 01458 844400 fax: 01458 844411

www.strode-college.ac.uk

